

PH 022 528 1976 Absences

16 o Poutu te rangi 2022



Loving the creativeness of our tamariki with their bird feeders! There are some very happy manu out there!

We ❤️ looking  
after our manu



*Tēnā koutou katoa*

*Week 7 already and we are riding the COVID wave. Thank you for your understanding while we negotiate our way through the current outbreak. Above - Look at all these amazing tamariki from Whare Taonga who are bringing their book bags back everyday! Rawe, what super readers you are going to be!*

## Student Leaders - 2022

On the back page are our Student Leader nominees for 2022. Every class has gone through the process of voting for the nominees for their class after talking about what qualities a good leader has. From here these tamariki campaign and then we have an election day where every child gets to vote for the Student Leaders in their roopu. Usually we do this in Week 9 but we are going to push this out to the beginning of Term 2 because we have so many tamariki isolating. This means that all tamariki will have a fair chance to let their roopu know why they would be a good Student Leaders through their campaigning. Congratulations to all of those representing their classes. Congratulations too to Alexandria Baker and Raniera Te Kani who are the Tū Rangatira Student Leaders for 2022!

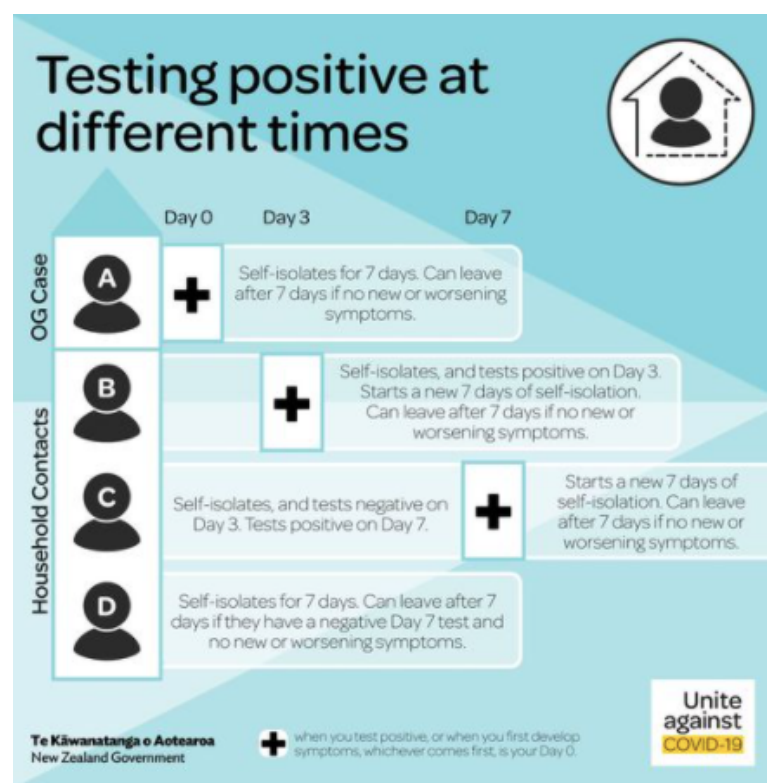
## Covid19 updates for you

Today we have 136 students at home isolating with whānau and we have had 27 return from isolation over the last two days. We continue to monitor all of our classes, as well as ensuring we are continuing with our hygiene practices around mask wearing and sanitising, cleaning surfaces and distancing as much as possible. We appreciate that whānau are updating us on their current situations within households when tamariki are not at school. We will continue to endeavour to keep the school open while keeping everyone safe. All classes have set up distance learning on their pages for those tamariki that are **isolating at home**. Isolation is now 7 days - please use the information to the right to help with cases in your household and isolation periods.

**BANKING**  
Well done to  
the 31 bankers  
last week!

**The Kiwi** Do you know what a kiwi is? Well let me tell you what I know. A kiwi is a native bird and icon. They have big strong legs, no tail and tiny wings. Kiwi eat worms, spiders and other bugs and plants. They live in NZ forests in old logs or burrows in the ground. They have strong legs to protect themselves and brown feathers to blend into the ground. Kiwi are nocturnal birds, they come out at night and sleep in the day. Kiwi are a protected bird in New Zealand. I think kiwi are awesome.

**Selemaia Tonga Year 2**





# Wharekauri Teina and Whare Tipu having fun during Mai Time.

One of our school values is

# Fun



## Sport Academy Updates

The **Surf Academy** continues to head out on Friday mornings with Matua Hamuera and Matua Fergus and have been enjoying their start to the morning.

**Swimming Academy** is back up and going. Thanks to the whānau who are helping out with transport and breakfast, especially at the moment filling gaps because we have people isolating and unable to do their duty.

**Rugby Academy** has been busy with lots of tamariki turning up for the morning fitness sessions as well as the after school skills sessions. It has been a little disrupted this week with the weather but fingers crossed next week is better.

**Netball Academy** has started and again it is great to see the number of tamariki who have committed themselves to this. Remember to connect to the facebook page so you are updated with all that is happening.

**Soccer Academy** has had good numbers turning up, again we have a few isolating but the others are ensuring they make the effort to be there. The work ethic from those there last Tuesday was awesome!

**Hockey Academy** already has 10 keen names down. They will be having a meeting in the next week or so and setting up ready to go for term 2.

Please join up to the appropriate facebook pages for these academies if your tamariki are members to ensure you are receiving all the messages around trainings and expectations. Great to see sports shirts being worn and thanks to all of our committed coaches and parents who are helping out.

## Te Taiao

Our tamariki are loving the Te Taiao unit that their learning is around at the moment. It is really heartening to see our tamariki noticing what is around them, connecting what they are seeing to their learning and enjoying their learning. We have seen so many amazing bird feeders created (innovation has been very evident) and our tamariki have loved watching the birds come and feed from them, while trying to identify what types of birds they are.



# We ♥ love to create



# Student Leaders Nominees 2022

## Puhi Kaimoana Nominees



Nico



Rebekah



Te Owairere



Jayden



Te Whetu



Patience R



Siosaia



Ella B



Bruceanna



Boss

## Puhi Kaiariki - L3 Nominees



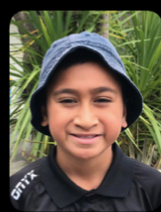
Ngatake



Te Kahu



Hinemihiata



Peter



Lexus



Ataahua



Ngahuia-Jane



Aizaia



Pearl



Danni

## Tū Rangatira 2022



Alexandria



Raniera

Above - Tū Rangatira Student Leaders for 2022. Congratulations!

## Puhi Kaiti Nominees



Lovey



Honey



Tautuhi



Ridge-Din



Timote



Unique

## Puhi Kaiariki - L2 Nominees



Honey



Ari



Aiokura



Skyla



Ethan



Waimarama



Aria



Ruka